

**MALIBU II**

**Two-Piece Toilet, CEL, 10" Rough-In**

6325.110 Bowl, 6325.028 Tank

**Product Features**

- Vitreous china two-piece toilet
- Chair-height (16-1/2"), compact elongated bowl
- MicroGlaze™ anti-microbial, stain-resistant glaze
- 10" (254 mm) rough-in

**EcoQUATTRO™ Flushing System**

- High-performance, gravity flush
- 1.28 gallons (4.8 liters) per flush – EPA WaterSense, high-efficiency toilet (HET)
- Fully-glazed, 2-1/8" internal trapway
- Oversized 3" flush valve
- Large 9" x 7" water surface area and optimized rim jets, for an exceptionally clean bowl

**Accessories Included**

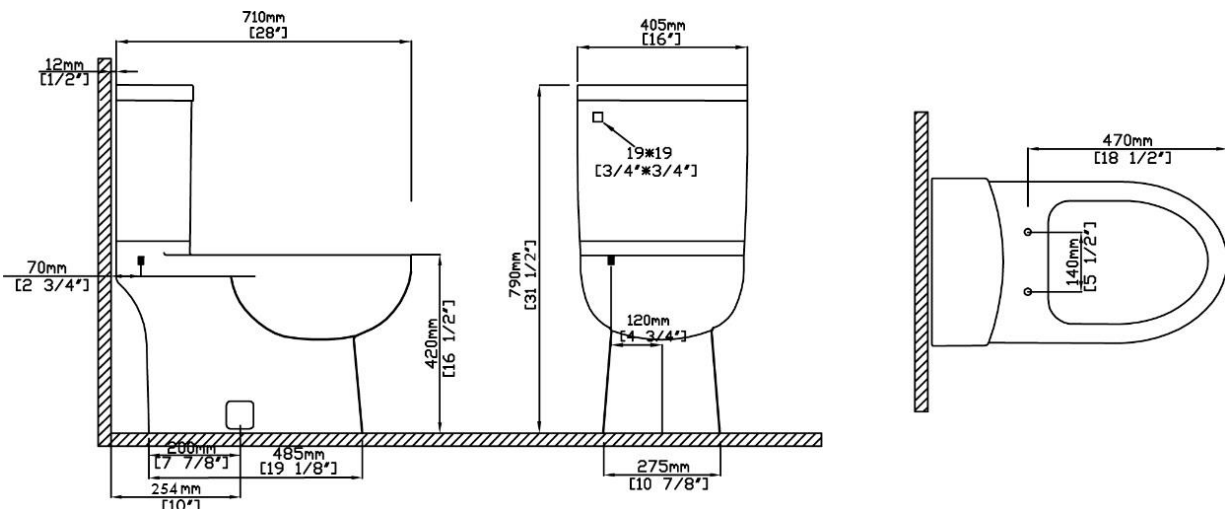
- Toilet seat and cover, with slow-close hinges
- Solid metal trip lever
- Bolt alcove cover tiles (set of 2)

**Quality Assurance**

- Factory flush-tested
- Limited lifetime product warranty



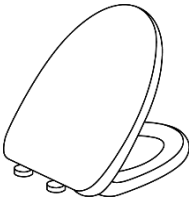
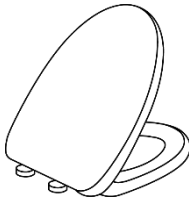
**Dimensional Diagram**



**IMPORTANT:** Dimensions are nominal and may vary within the range of tolerance per by NSI Standard A112.19.2. These measurements are subject to change. No responsibility is assumed for use of superseded or voided pages.

PRODUCT OPTIONS & PARTS

Glaze Colors	
 <b>.01 White</b>	 <b>.06 Biscuit</b>

Toilet Seats		
 <b>S-235 (Standard)</b>	 <b>S-232 (Duroplast)</b>	

Tank Levers & Available Finishes					
 <b>F-62 (Standard)</b>		 <b>F-63</b>		 <b>F-65</b>	
.500 Chrome (Standard)	.504 Polished Brass .508 Venetian Bronze	.500 Chrome (Standard)	.504 Polished Brass .508 Venetian Bronze	.500 Chrome (Standard)	.504 Polished Brass
.502 Polished Nickel	.01 White Enamel	.502 Polished Nickel	.01 White Enamel	.502 Polished Nickel	.508 Venetian Bronze
.503 Satin Nickel		.503 Satin Nickel		.503 Satin Nickel	.01 White Enamel
 <b>.500</b> Polished Chrome	 <b>.502</b> Polished Nickel	 <b>.503</b> Satin Nickel	 <b>.504</b> Polished Brass	 <b>.508</b> Venetian Bronze	 <b>.01</b> White Enamel

Valve & Installation Parts				
Fill Valve	Flush Valve	Flapper	Tank-to-Bowl Kit	Bolt Cover Tiles
VL-5801	VH-5802.16	9400.580.01	9400.513.01	MC-300

Compliance Certifications	
<p><i>Meets or exceeds the following specifications:</i></p> <ul style="list-style-type: none"> <li>ASME A112.19.2M</li> <li>CSA B45.1</li> </ul>	 <p><b>Meets the Americans With Disabilities Act guidelines and ANSI A117.1 requirements for accessible building facilities. Check local codes.</b></p>